

The 20th International Conference on RANDOM STRUCTURES AND ALGORITHMS

Gniezno, 1-5 August, 2022



Information for Participants

- 1. Gniezno**
- 2. Traveling to Gniezno**
- 3. Train schedule**
- 4. Conference venue**
- 5. Transportation**
- 6. Map of Gniezno**
- 7. Poland - general information**
- 8. Useful facts**
- 9. Contact information**
- 10. Walking tour**
- 11. Random Run**
- 12. Additional attractions**
- 13. Route to conference dinner**
- 14. Restaurants, pubs, coffee shops**
- 15. Sponsors**

Gniezno

Gniezno is a city in central-western Poland, about 50 km east of Poznań with about 70.000 inhabitants.



According to the Polish legend, three brothers: Lech, Czech and Rus, were exploring the wilderness to find a place to settle. Suddenly they saw a hill with an old oak and an eagle on top. Lech said, 'This white eagle I will adopt as an emblem of my people, and around this oak I will build my stronghold, and because of the eagle's nest [gniazdo in Polish] will call it Gniezdno [modern: Gniezno].' The other brothers went further on to find a place for their people. Czech went to the South and Rus went to the East.

Traveling to Gniezno

Flight

If you fly to Poznań Ławica airport, the best way to get to Gniezno is to first go to the main train station Poznań Główny and then take a direct train to Gniezno.

In order to get from the airport to the main train station Poznań Główny, take a taxi or Uber/Bolt.

There is also a direct bus no. 159. The ride takes approx. 20 minutes and the ticket costs 6 PLN. You can buy it in a ticket machine at the airport or on the bus. Note that the ticket machines often allow only cash (coins). You can also buy tickets in Relay kiosk in the terminal or using one of the mobile apps (CallPay, moTICKET, mPay, SkyCash). More information available here: <https://poznanairport.pl/en/before-the-trip/access-to-the-airport/access-to-the-centre/>

Train

There are numerous train connections between Gniezno and Poznań and between Poznań and Warsaw or Berlin. In order to find a connection and buy a ticket visit : <https://rozklad-pkp.pl/en>

Tickets for trains operated by Koleje Wielkopolskie can only be bought on <https://koleje-wielkopolskie.com.pl/>. You can also buy train tickets in the ticket machines or ticket offices located in a couple of places around the train station.

Train schedules

Trains to Gniezno (* available only on 01/08/2022)

Berlin Hbf -> Gniezno (direct): 12:38

Berlin Hbf -> Gniezno (change in Poznań): 5:43*, 9:38, 13:41, 15:41, 17:41, 18:43

Poznań -> Gniezno : 2:24, 4:26*, 5:28, 5:42*, 5:53*, 6:34, 6:38, 6:58, 8:06, 8:36, 9:08, 9:23, 9:36, 9:58, 10:25, 11:49*, 12:29, 13:02, 13:44, 13:56*, 14:33, 14:42, 14:54, 15:18*, 15:36, 15:40, 15:53, 16:16*, 16:46, 16:59, 18:03, 18:28, 18:46, 19:07*, 19:38, 19:52, 20:57*, 21:42, 22:14, 23:02

Warsaw -> Gniezno (direct): 14:43

Warsaw -> Gniezno (change in Poznań): 4:15*, 05:06, 6:14, 8:12, 9:25, 11:55, 12:15, 13:24, 14:43, 15:09, 16:15, 17:29, 19:25, 21:33

Trains from Gniezno (* available only on 05/08/2022, **available only on 06/08/2022)

Gniezno -> Berlin Hbf (direct): 11:51

Poznań -> Berlin Hbf (direct): 7:28, 9:25, 11:28, 15:28, 19:28**

Gniezno -> Poznań : 1:30**, 1:34*, 4:15*, 4:43, 5:10, 5:39*, 6:04**, 6:13*, 6:21*, 6:43, 7:13, 7:53, 7:59*, 8:24, 8:52*, 8:53**, 9:02, 9:19*, 9:40**, 10:31*, 10:57, 11:11, 11:51, 12:40, 13:02, 13:06*, 13:10**, 14:12, 14:56, 15:12, 16:11, 16:57, 17:05, 17:27*, 17:36, 18:06, 18:24, 18:51**, 18:56*, 19:04, 19:43, 20:15*, 20:59**, 21:07, 21:18*, 22:00*, 22:31

Gniezno -> Warsaw (direct): 9:44

Poznań -> Warsaw (direct): 5:00, 6:15, 7:30, 8:41, 9:08, 11:04, 12:32, 12:36, 14:59, 16:42, 17:32, 18:36, 19:42

It takes about **17 minutes (on foot)** to get from Gniezno Train Station to the conference venue (and the dormitory).

Conference venue

All lectures take place in the Conference building which is the main building of the **Instytut Kultury Europejskiej UAM w Gnieźnie**.



Conference office is located on the ground floor of the building. Please, go there to register, pick up the keys to your dormitory room or whenever you have any questions or inquiries.

Registration opens on July 31st at 11 a.m. If you want to stay longer in Gniezno, please contact the organizers in advance.

Breakfast For those staying in the dormitory, breakfast is included in your accommodation and will be served in the dormitory cafeteria.

Lunch will be catered directly at the conference venue.

Dinner On Monday we will have a welcome party, and on Thursday there will be a conference dinner in Balcerewo Palace. In the remainig days we don't provide dinner, but there are a couple of relatively good restaurants in the city center.

For hungry travellers some snacks and snadwiches will be available in dormitory's fridges.

If you arrive late at night/early in the morning (or whenever the conference office is closed), please pick up the key to your dormitory room from the porter in the main building.

Transportation

Gniezno is a relatively small city and by far the easiest way to get around is by **foot**. For longer trips you can use a bus. Tickets can be bought either in newsstands [kiosk], or in ticket machines located at major stops.

Daytime buses operate from around **6 a.m. to 9 p.m.**

Type of ticket	Full price
Single ride (without transfer)	3.00 PLN
60 minutes*	4.00 PLN
24 hour*	10.00 PLN
10-day ticket	38.00 PLN

*Those tickets can be bought only from the bus driver with an exact amount of cash or online (mobile ticket - through moBilet, SkyCash or CallPay app)

Taxi

Approximate prices of some selected rides:

- Institute of European Culture in Gniezno - Hotel - 20 PLN
- Institute of European Culture in Gniezno - Balcerowo Palace - 20 PLN
- Institute of European Culture in Gniezno - Gniezno railway station - 20 PLN
- Balcerowo Palace - Hotel - 20 PLN
- Gniezno railway station - Hotel - 20 PLN
- Gniezno - Poznań airport (Ławica) - 330 PLN (fixed priced when you use Maxi Taxi)

To order a taxi, use the local app (Uber does not operate in Gniezno):

<https://itaxi.pl/pobierz/>

or call:

- **+48 512800808** Maxi Taxi
- **+48 614262626** Radio Taxi Lech,
- **+48 721043613** Edi Taxi,

Map of Gniezno



Poland - general information

Post Office

There are a couple of post offices (POCZTA) in Gniezno open from 8 a.m. to 7 p.m.

Pharmacy

If you need anything from a pharmacy, look for APTEKA. Most pharmacies are open from 8 a.m. to 6 p.m.

Electricity

230 V, 50 Hz. Plugs are the same as in the most of Continental Europe.

Money exchange / ATM (Bankomat)

In Poland the official currency is zloty (PLN), often abbreviated to zł. You can exchange all major currencies into zloty at banks or currency exchange offices - KANTOR. The current exchange varies a lot these days and is app. **4.65 PLN for 1 USD, 4.70 PLN for 1 EUR and 5.55 PLN for 1 GBP**. To exchange your foreign currencies into zlotys it is best to go to a KANTOR (bureau de change, currency exchange office).

Shops - opening hours

Shops are generally open Mon - Fri 10 a.m. - 6 p.m. and Sat 10 a.m. - 3 p.m. Supermarkets and shopping malls may stay open as late as 10 p.m., excluding Sundays when only small grocery shops called "Żabka" are open!

Useful facts

Toilet signage

Toilets are typically marked by one of the signs TOALETA or WC. Also, it is customary in Poland that ladies' toilets are denoted by a circle or the sign "dla pań", whereas gents' toilets are denoted by a triangle or the words "dla panów".



Tips

Although tipping at restaurants, clubs, etc. is not obligatory, yet it is customary to show your appreciation by leaving a tip of around 10–15% of the bill. When paying for a taxi, you can round up the bill, it prevents hunting for change. Generally, taxi drivers do not expect to be tipped, but if you do the driver will be pleased. Always request a receipt (PARAGON) to avoid an (unlikely) possibility that someone would like to cheat you.

Law: drinking, smoking and jaywalking

Drinking in public places (outside restaurants, pubs or party zones) is illegal (the police can give you a ticket). Smoking at bus/tram stops (both under the roof of the stop and around it) is illegal and you can be fined for it. You cannot smoke in restaurants and bars unless there is a separate smoking area. Smoking on streets, however, is very common.

Jaywalking is illegal and may incur a fine if noticed by a police officer.

Contact information

Important phone numbers and email address

- All emergencies: 112

- Organizers :

Jerzy Jaworski: +48 502 655 530

Katarzyna Taczała: +48 504 613 260

Karolina Pietsch: +48 694 836 831

- Email: rsa2021@amu.edu.pl



Internet Access

Conference venue: EduRoam is available in the conference venue. On personal request specific username and password will be provided for participants who can not use EduRoam.

Dormitories EduRoam is available through the WiFi or cable connection (you need to bring your own cable).

Hotel Pietrak / Adalbertus / Ibis

Standard hotel WiFi.

Walking tour

Conference trip

Wednesday, August 3, 2022

We will have a guided tour around Gniezno. In particular, we will visit ***the Cathedral*** - the place where the Poland's first five kings were crowned. Please sign up for the tour upon arrival.

The highlight of the Cathedral are the ***Gniezno doors***, a pair of winged bronze doors from the 12th century. Featuring 18 panels, each masterfully engraved with scenes from the life of St. Adalbert, start from Adalbert's birth on the bottom left panel, and then follow his story upwards and around. Among them the most interesting are an exorcism illustrated on the sixth panel, and St. Adalbert's murder on the fourteenth.

All participants will be given an audioguide in English.

Additional attractions

Sport

Conference venue has a **gym** and a small **sports hall**, as well as an **out-door basketball court**. As in previous years we will try to organize a **football pitch** for friendly games during the conference.

Welcome party

Welcome party will take place on Monday evening.

Conference dinner

Conference dinner will take place on Thursday in **Balcerowo Palace** which is located 2.2 km from the conference venue. More info about the place can be found at <http://www.hotel-pietrak.home.pl/balcerowo/>

We provide transport from the conference venue to the restaurant and back. The buses will depart from the conference venue at 18:45.



Random Run

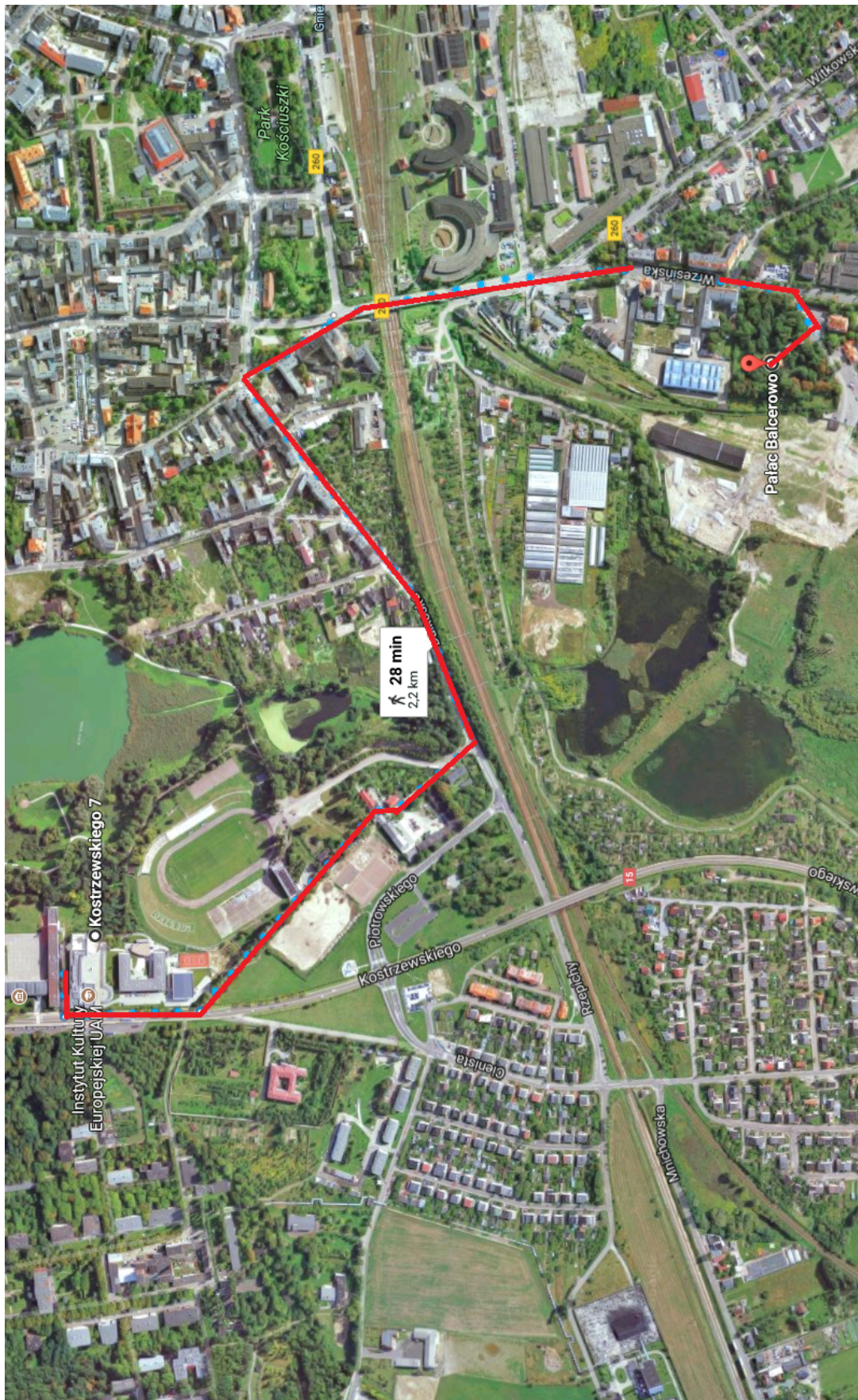
Random Run will take place on Wednesday at 18 p.m. at Gniezno municipal stadium. The stadium is located just next to the conference venue. It is a training ground of the local soccer team Mieszko and therefore will be accessible only on the day of the run. Please notice that the running track is in a rather poor condition.



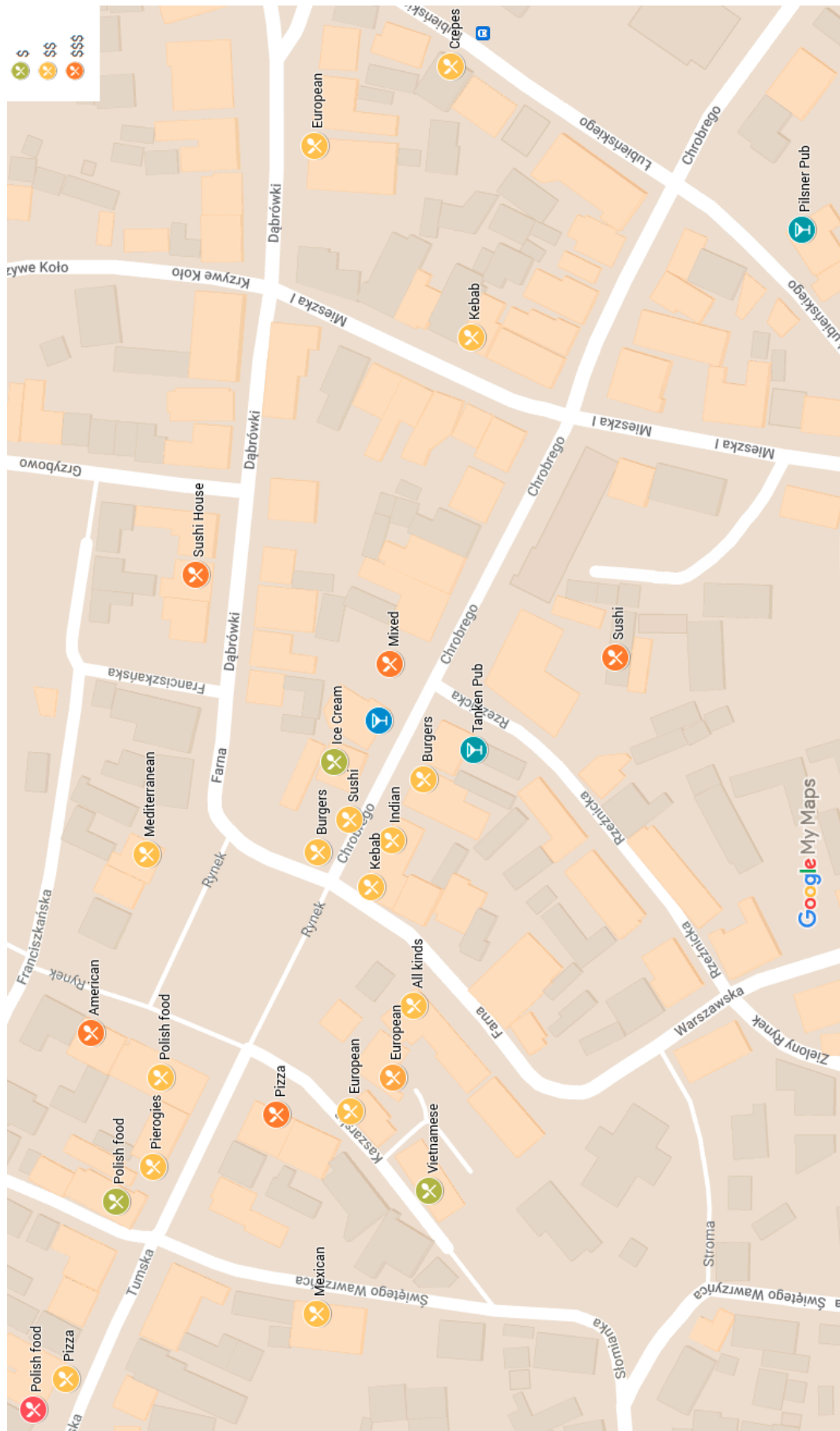
There is a park and a lake next to the venue. The circumference of the lake is about 1.5 km and can be used as a training course before the run.

For more hardcore runners there are numerous lakes outside the city which can be considered as a destination for a longer jog.

Route to Balcerowo Palace



Restaurants, pubs and coffee shops



Sponsors

